

**We have two factories: Tianjin Botai Heat-Exchanger Equipment Co., Ltd is mainly specialized in production of plate heat exchanger and its spares.  
Tianjin Jinfan Mould Co., Ltd is main specialized in the design and manufacturing the plate mould and gasket mould.**

Alfa Laval Models				Factory Show		
Model	Corrugation Angle	Plate Thickness(mm)	Remark			
M3	High Theta&Low Theta	0.5-0.7		 <p>Tianjin Botai Factory</p>	 <p>Raw Material</p>	 <p>Raw Material Cutting Machine</p>
M6B	High Theta&Low Theta	0.5-0.7				
M6M	High Theta&Low Theta	0.5-0.7				
M6MX	High Theta&Low Theta	0.5-0.7				
M10B	High Theta&Low Theta	0.5-0.7				
M10M	High Theta&Low Theta	0.5-0.7				
M15E	High Theta	0.5-0.6				
M15B	High Theta&Low Theta	0.5-0.7				
M15M	High Theta&Low Theta	0.5-0.7				
MX25M	High Theta&Low Theta	0.6-0.8				
MX25B	High Theta&Low Theta	0.5-0.7		 <p>Raw Material Cutting Machine</p>	 <p>Plate Production Workshop</p>	 <p>Pressing Machines</p>
M30	52°/67°/127°/133°	0.5-0.8				
MA30S	High Theta	1.0-1.2				
MA30M	High Theta	0.9-1.2				
M6MW	High Theta&Low Theta	0.5-0.7				
M10BW	High Theta&Low Theta	0.5-0.7				
MK15BW	High Theta&Low Theta	0.5-0.7				
T20MW	High Theta&Low Theta	0.5-0.8				
MA30W	Low Theta & High Theta	0.5-0.8				
AM10	High Theta&Low Theta	0.6-0.8				
A10B	High Theta&Low Theta	0.5/0.6		 <p>40,000T Pressing Machine</p>	 <p>15,000T Pressing</p>	 <p>Punched Machine</p>
A15B	High Theta&Low Theta	0.5-0.8				
A15BW	High Theta&Low Theta	0.5-0.8				
A20	Low Theta	0.6-0.9				
AM20B	High Theta&Low Theta	0.6-0.8				
A20B	High Theta&Low Theta	0.5-0.7				
AM20	High Theta&Low Theta	0.6-0.8				
AK20	High Theta&Low Theta	0.6-0.8				
AX30B	High Theta&Low Theta	0.6-0.8				
AX30BW	High Theta	0.6-0.8				
A35	Low Theta	0.6-0.8				
Clip3	High Theta	0.5-0.7				

Clip6	High Theta&Low Theta	0.5-0.7	
Clip8	High Theta&Low Theta	0.5-0.7	
Clip10	High Theta&Low Theta	0.5-0.7	
Clip15	High Theta&Low Theta	0.5-0.7	
P16	High Theta&Low Theta	0.5-0.7	
P26	High Theta&Low Theta	0.5-0.7	
P32	90°	0.7-0.9	
P36	90°	0.5-0.7	
T2B	High Theta	0.5/0.6	
TL3B	High Theta&Low Theta	0.5-0.7	
T5B	High Theta&Low Theta	0.5-0.7	
T5M	High Theta&Low Theta	0.5-0.7	
TL6B	High Theta&Low Theta	0.5-0.7	
TS6M	High Theta&Low Theta	0.5-0.7	
T8B	High Theta&Low Theta	0.5-0.7	
T8M	High Theta&Low Theta	0.5-0.7	
TL10B	High Theta&Low Theta	0.5-0.7	
TL10P	High Theta&Low Theta	0.5-0.7	
TL15B	High Theta & Low Theta	0.5-0.7	
T20M	High Theta&Low Theta	0.6-0.8	
T20B	High Theta&Low Theta	0.5-0.7	
T20P	High Theta&Low Theta	0.5-0.8	
TS20M	High Theta&Low Theta	0.6/0.7	
T20S	High Theta	0.6-0.8	
T20BW	High Theta&Low Theta	0.5-0.7	
T25B	Low Theta	0.5-0.7	
TL35S	High Theta	0.8/0.9	
TL35B	High Theta&Low Theta	0.5-0.8	
T45M	High Theta & Low Theta	0.6-0.8	
T50M	High Theta	0.6-0.8	
TS50M	Low Theta	0.6-0.8	Mould under Design
AC400 Semi-welded		0.6/0.7	
AC600 Semi-welded		0.6/0.7	
AC800 Semi-welded		0.6/0.7	
EC500 Semi-welded		0.6-0.8	
EC650 Semi-welded			Mould under Design



Plate Mould



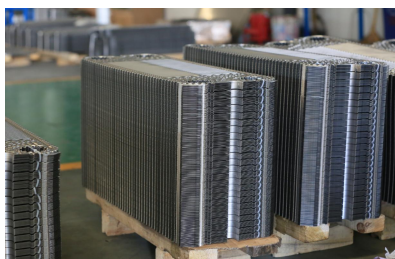
Plate Pressing



Plate Pressing



**Factory Show**



EC650 Semi-welded			Mould under Design
-------------------	--	--	--------------------

**APV Models**

Model	Corrugation Angle	Plate Thickness(mm)	Remark
T4	Horizontal120°	0.5-0.7	
TR1	High Theta & Low Theta	0.5-0.7	
H12	Horizontal&Vertical120°	0.5-0.7	
H12 Fresh Water Generator	Horizontal120°	0.5-0.7	
H17	Horizontal&Vertical120°	0.5-0.7	
N25	Horizontal120°	0.5/0.6	



Plate on Stock



Plate on Stock



Raw Material on Stock

N35-Glued	Horizontal&Vertical120°	0.5/0.6	Cannot press Titanium Plates
N35-Loc-in	Horizontal&Vertical120°	0.5/0.6	
N50	Horizontal120°	0.5/0.6	
O034E	High Theta&Low Theta	0.6/0.7	
Q030E	High Theta&Low Theta	0.6/0.7	
Q055E	High Theta&Low Theta	0.6/0.7	
Q080E	High Theta &Low Theta	0.6/0.7	
Q030D	High Theta&Low Theta	0.6/0.7	
Q055D	High Theta&Low Theta	0.6/0.7	
Q080D	High Theta&Low Theta	0.6/0.7	
A055	High Theta&Low Theta	0.5-0.7	
A085	High Theta&Low Theta	0.5-0.7	
A145	High Theta	0.5-0.7	
J060	High Theta&Low Theta	0.5-0.7	
J092	High Theta&Low Theta	0.5-0.7	
J107	High Theta&Low Theta	0.5-0.7	
J154	High Theta&Low Theta	0.5-0.7	
J185	High Theta&Low Theta	0.5-0.7	
M060	Horizontal&Vertical121°	0.5-0.7	
M092	Horizontal&Vertical121°	0.5-0.7	
M107	Horizontal&Vertical121°	0.5-0.7	
SR2	3 Types Angles	0.5-0.7	
SR3	High Theta&Low Theta	0.5-0.7	
R5	High Theta	0.9/1.0	
SR6GL	High Theta&Low Theta	0.6/0.7	
SR6AG	High Theta&Low Theta	0.6/0.7	
SR6AA	High Theta&Low Theta		
R8GI	High Theta&Low Theta	0.6/0.7	
SR9	High Theta&Low Theta	0.7/0.8	
R10	180°	0.9/1.0	
R14	90°180°	0.6/0.7	
SR14AP	90°		
SR14AG	90°		
SR14GD	90°		
B134BW	High Theta	0.5-0.7	
B063	High Theta&Low Theta	0.5-0.7	
B110	High Theta&Low Theta	0.5-0.7	
B134	High Theta&Low Theta	0.5-0.7	
B158	High Theta&Low Theta	0.5-0.7	
B205	High Theta&Low Theta	0.5-0.7	
P105	Horizontal & Vertical120°	0.6-0.8	
P190	Horizontal & Vertical120°	0.6-0.8	
TR9AL	90°180°	0.5-0.7	
TR9AV	90°180°	0.5-0.7	



Plate Heat Exchanger Workshop



Plate Heat Exchanger Workshop



Flame Cutting Machine



CNC Laser Welding Machine



CNC Laser Cutting Machine



CNC Machining Center



Sandblasting Room



Painting Room



PHE Tightening Device

**Product Show**



Hydrotest Area



Frame Plate Process



Finished Frame Plates

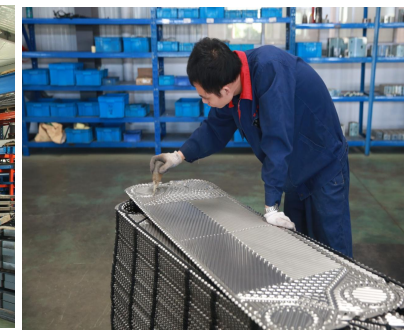
TR9GN	90°180°	0.5-0.7	
TR9GL	90°180°	0.5-0.7	
LR9GN	90°	0.5-0.7	
LR9GL	90°	0.5-0.7	
R55	Vertical		
K34	Horizontal&Vertical	0.6/0.7	
K55	Horizontal&Vertical	0.6/0.7	
K71	Horizontal&Vertical	0.6/0.7	

## Tranter Models

Model	Corrugation Angle	Plate Thickness(mm)	Remark
GC008	High Theta&Low Theta	0.5-0.7	
GC009	High Theta&Low Theta	0.5-0.7	
GL13	High Theta&Low Theta	0.5-0.7	
GX4	Low Theta	0.5-0.7	
GX12	High Theta&Low Theta	0.5-0.7	
GX18	High Theta&Low Theta	0.5-0.7	
GC16	High Theta&Low Theta	0.5-0.7	
GC26	High Theta&Low Theta	0.6/0.7	
GX26	High Theta&Low Theta	0.5-0.7	
GX42	High Theta&Low Theta	0.5-0.7	
GC50	High Theta	0.5-0.7	
GX51	High Theta&Low Theta	0.5-0.7	
GC51	High Theta&Low Theta	0.6/0.7	
GCD054	High Theta&Low Theta		
GC60	High Theta&Low Theta	0.6/0.7	
GX60	High Theta&Low Theta	0.6/0.7	
GX100	High Theta&Low Theta	0.6/0.7	
GX140	High Theta&Low Theta	0.6/0.7	
GX64	High Theta&Low Theta	0.5-0.7	
GX91	High Theta&Low Theta	0.5-0.7	
GX118	High Theta&Low Theta	0.5-0.7	
GL85	High Theta&Low Theta	0.6/0.7	
GL145	High Theta&Low Theta	0.6/0.7	
GL205	High Theta	0.6/0.7	
GX85	High Theta&Low Theta	0.6/0.7	
GX145	High Theta&Low Theta	0.6/0.7	
GX205	High Theta&Low Theta	0.6/0.7	
GF57	High Theta	0.8-1.0	
GF97	High Theta	0.8-1.0	
GF187	High Theta	0.8-1.0	
GF206L	High Theta	0.9-1.1	
GL230	High Theta&Low Theta	0.6/0.7	
GL330	High Theta&Low Theta	0.6/0.7	



PHE Frame



Gasket Installation



Gasket Installation



Plate Installation



Plate Installation



Finished Plate Heat Exchanger



Evaporator-EC Series



Condenser-AC Series



EC350 Evaporator



Lengthened M30



Sigma M90 Evaporator



Free Flow PHE

## Sondex Models

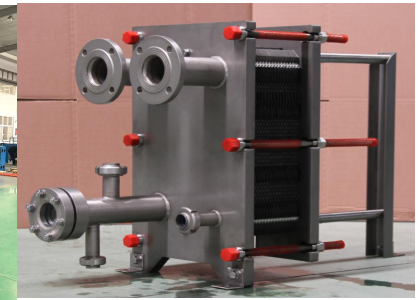
Model	Corrugation Angle	Plate Thickness(mm)	Remark
S4A	High Theta	0.5-0.7	
S8A	High Theta	0.5-0.7	
S7A	High Theta&Low Theta	0.5-0.7	
S14	High Theta&Low Theta	0.5-0.7	
S14A	High Theta&Low Theta	0.5-0.7	
S20A	High Theta&Low Theta	0.5-0.7	
S7Glued	High Theta	0.6-0.8	
S20Glued	High Theta	0.6-0.8	
SF25A	180°	0.9-1.1	
S16B	High Theta	0.5-0.7	
S9A	High Theta&Low Theta	0.5-0.7	
S19A	High Theta&Low Theta	0.5-0.7	
S31A	High Theta&Low Theta	0.5-0.7	
S17	High Theta&Low Theta	0.5-0.7	
S21	High Theta&Low Theta	0.5-0.7	
S21A	High Theta&Low Theta	0.5-0.7	
S22	High Theta&Low Theta	0.5-0.7	
S23	High Theta&Low Theta	0.5-0.7	
S37	High Theta&Low Theta	0.5-0.7	
S35	High Theta&Low Theta	0.5-0.7	
S50	High Theta&Low Theta	0.5-0.8	
S30	High Theta&Low Theta	0.5-0.8	
S41	High Theta&Low Theta	0.5-0.7	
S41A	High Theta&Low Theta	0.5-0.7	
S42	High Theta&Low Theta	0.6/0.7	
S63	High Theta&Low Theta	0.6/0.7	
S43AD	Low Theta	0.6/0.7	
S43B	High Theta&Low Theta	0.5-0.7	
S43	High Theta&Low Theta	0.5-0.7	
S65	High Theta&Low Theta	0.5-0.7	
S100	High Theta&Low Theta	0.5-0.7	
S47	High Theta&Low Theta	0.5-0.7	
S64	High Theta&Low Theta	0.5-0.7	
S81	High Theta&Low Theta	0.5-0.7	
S121	High Theta&Low Theta	0.5-0.7	
S188	High Theta&Low Theta	0.5-0.7	
S62	High Theta&Low Theta	0.5-0.7	
S86	Low Theta & High Theta	0.5-0.7	
S110	High Theta&Low Theta	0.5-0.7	
S86A	High Theta&Low Theta	0.5-0.7	
S113G	High Theta&Low Theta	0.5-0.7	
S200	High Theta	0.6-0.8	
S145	High Theta&Low Theta	0.5-0.7	
S210	High Theta&Low Theta	0.5-0.7	



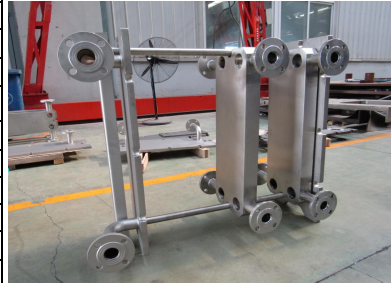
**Shell and Plate Heat Exchanger**



**Evaporator & Condenser**



**PHE in Food Industry**



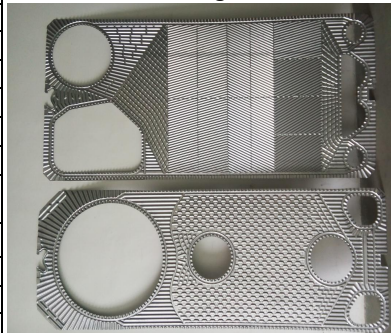
**Multi-Stage PHE**



**PHE Frame**



**New Product-Compabloc Type**



**EC700& AC600 Plate**



**Semi-welded Plate**



**Double Wall Plate**



**Round Plate**



**PHE Gaskets**



**Rubber Liner**

S201	High Theta&Low Theta	0.5-0.7	
SF53	180°	0.8-1.0	
SF123	180°	0.8/0.9	
SF160	180°	0.9/1.0	
S130Glued	Low Theta	0.5-0.7	
SFD13	180°	0.5-0.7	
SFD22	180°	0.5-0.7	
SFD23	180°	0.5-0.7	

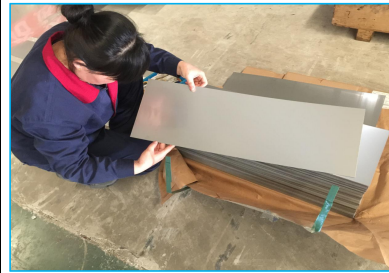
### GEA Models

Model	Corrugation Angle	Plate Thickness(mm)	Remark
VT04	High Theta	0.5-0.7	
VT10	High Theta&Low Theta	0.5-0.7	
VT20	Horizontal&Vertical127°	0.5-0.7	No Titanium Plates
VT205	High Theta	0.4mm	Double Wall Plate
VT20P	120° Vertical138°	0.5/0.6	No Titanium Plates
VT40	Horizontal&Vertical118°	0.5/0.6	No Titanium Plates
VT40(M)	116°/117°	0.5/0.6	No Titanium Plates
VT405P	High Theta	0.5-0.7	
AT405	Horizontal118°	0.5-0.7	
VT405	Horizontal&Vertical118°	0.5-0.7	
VT80	Horizontal&Vertical117°	0.5-0.7	No Titanium Plates
VT80(M)	Horizontal&Vertical117°	0.5-0.7	No Titanium Plates
VT805	High Theta	0.5-0.7	
VT2508	Horizontal&Vertical127°	0.6-0.8	
NT25M	High Theta	0.5-0.7	
NT50T	129° Vertical127°	0.5-0.7	
NT50M	129°Vertical127°	0.5-0.7	
NT50X	129°Vertical127°	0.5-0.7	
NT80M	High Theta	0.5-0.7	
NT100T	Horizontal&Vertical128°	0.5-0.7	
NT100M	Horizontal&Vertical128°	0.5-0.7	
NT100X	Horizontal&Vertical128°	0.5-0.7	
NT150L	Horizontal&Vertical120°	0.5-0.7	
NT150S	Horizontal&Vertical120°	0.5-0.7	
LWC150L	High Theta		Semi-welded
LWC150S	High Theta		Semi-welded
NT250S	Horizontal&Vertical124°	0.5-0.7	
NT250M	Horizontal&Vertical124°	0.5-0.7	
NT250L	Horizontal&Vertical124°	0.5-0.7	
NT350S	Horizontal&Vertical127°	0.5-0.7	
NT350M	Horizontal&Vertical127°	0.5-0.7	
NH350S		0.5-0.7	
NH350M		0.5-0.7	
FA184		1.0-1.2	
N40	180°	0.8/0.9	

### Vicarb Models

Model	Corrugation Angle	Plate Thickness(mm)	Remark
-------	-------------------	---------------------	--------

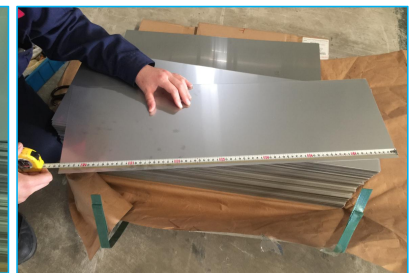
### Quality Inspection



Raw Material Inspection



Raw Material Inspection



Raw Material Inspection



Raw Material Inspection

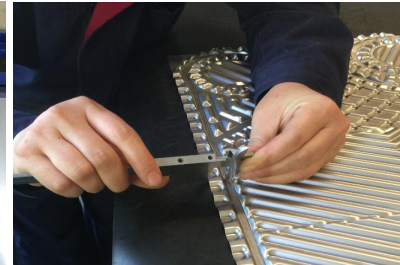


Plate Inspection

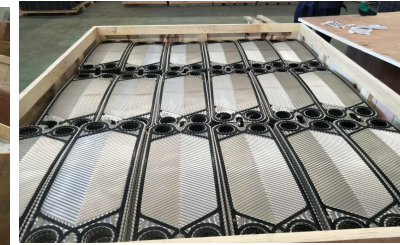


Plate Inspection

### Product Packaging



Gaskets will be packaged by standard cartons.



The PHE and Plates will be packaged by standard export plywood boxes.

V2	High Theta	0.5-0.7	
V4	Low Theta	0.5-0.8	
V8	High Theta&Low Theta	0.5-0.8	
V13	High Theta&Low Theta	0.5-0.9	
V20	High Theta&Low Theta	0.5-0.9	
V28	High Theta&Low Theta	0.6-0.8	
V45	High Theta&Low Theta	0.6-0.8	
V60	High Theta&Low Theta	0.6-0.8	
V100	High Theta&Low Theta	0.6-0.8	
V110	High Theta&Low Theta	0.6-0.8	
V130	High Theta&Low Theta	0.6-0.8	
V170	High Theta&Low Theta	0.6-0.8	
V280	High Theta	0.6-0.8	

## Transportation Modes



For goods with light weight and small volume, it will be delivered by express like **DHL, TNT, Fedex, UPS**.



For goods with heavy weight and large volume, it can be delivered by land transportation, shipping by sea or by air.

## Schmidt Models

Model	Corrugation Angle	Plate Thickness(mm)	Remark
Sigma09	High Theta	0.5-0.7	
Sigma13	High Theta&Low Theta	0.5-0.7	
Sigma26	High Theta&Low Theta	0.5-0.7	
Sigma27	High Theta & Low Theta	0.5-0.7	
Sigma36	High Theta&Low Theta	0.5-0.7	
Sigma37	137° Vertical117°	0.5-0.7	
Sigma48	High Theta&Low Theta	0.6-0.8	
Sigma49X(39X)	High Theta & Low Theta	0.5-0.7	
Sigma25Shallow	High Theta&Low Theta	0.5-0.7	
Sigma35Shallow	High Theta&Low Theta	0.5-0.7	
Sigma25	High Theta&Low Theta	0.6-0.8	
Sigma35	High Theta&Low Theta	0.6-0.8	
Sigma55	High Theta&Low Theta	0.6-0.8	
Sigma85	High Theta&Low Theta	0.6/0.7	
Sigma56	High Theta&Low Theta	0.5-0.7	
Sigma76	High Theta&Low Theta	0.5-0.7	
Sigma96	High Theta&Low Theta	0.5-0.7	
Sigma66	High Theta&Low Theta	0.6/0.7	
Sigma106	High Theta&Low Theta	0.6/0.7	
Sigma136	High Theta&Low Theta	0.6/0.7	
Sigma149	High Theta&Low Theta	0.6/0.7	
Sigma156	High Theta&Low Theta	0.6/0.7	
Sigma229	Low Theta	0.6/0.7	
Sigma90	180°	0.8/0.9	
G33	High Theta	1.0-1.2	

## Product Delivery



## Funke Models

Model	Corrugation Angle	Plate Thickness(mm)	Remark
FP02	High Theta		
FP04	High Theta&Low Theta	0.5-0.7	
FP08	High Theta&Low Theta	0.5-0.7	
FP05	126° Vertical126°	0.5-0.7	
FP09	126° Vertical126°	0.5-0.7	
FP10	High Theta&Low Theta	0.5-0.7	
FP16	High Theta&Low Theta	0.5-0.7	
FP22	High Theta&Low Theta	0.5-0.7	
FP14	High Theta&Low Theta	0.5-0.7	
FP17	High Theta&Low Theta	0.5-0.7	
FP206	High Theta&Low Theta	0.5-0.7	
FP205	High Theta&Low Theta	0.5-0.7	
FP31	High Theta&Low Theta	0.5-0.7	
FP40	High Theta&Low Theta	0.5-0.7	
FP50	High Theta&Low Theta	0.5-0.7	
FP71	High Theta&Low Theta	0.5-0.7	
FP41	High Theta&Low Theta	0.5-0.7	
FP60	High Theta&Low Theta	0.5-0.7	
FP80	High Theta&Low Theta	0.5-0.7	
FP42	High Theta & Low Theta	0.5-0.7	
FP62	High Theta & Low Theta	0.5-0.7	
FP82	High Theta & Low Theta	0.5-0.7	
FP112	High Theta&Low Theta	0.5-0.7	
FP405	High Theta	0.5-0.7	
FP70	High Theta & Low Theta	0.5-0.7	
FP100	High Theta & Low Theta	0.5-0.7	
FP130	High Theta	0.5-0.7	
FP81	High Theta & Low Theta		



## Thermowave Models

Model	Corrugation Angle	Plate Thickness(mm)	Remark
TL50P	High Theta	0.5/0.6	
TL90P	High Theta	0.5/0.6	
TL150P	High Theta	0.5/0.6	
TL90S	Low Theta	0.6-0.8	
TL150S	Low Theta	0.6-0.8	
TL200P	High Theta	0.5-0.7	
TL400P	High Theta	0.5-0.7	
TL200S	High Theta&Low Theta	0.6/0.7	
TL400S	High Theta&Low Theta	0.6/0.7	
TL250P	High Theta	0.5-0.7	
TL500P	High Theta	0.5-0.7	
TL250S	High Theta&Low Theta	0.6/0.7	
TL500S	High Theta&Low Theta	0.6/0.7	
TL250SSW	High Theta&Low Theta	0.6/0.7	
TL500SSW	High Theta&Low Theta	0.6/0.7	
TL650P	High Theta	0.6/0.7	



ООО «ТИ-СИСТЕМС» ИНЖИНИРИНГ И ПОСТАВКА ТЕХНОЛОГИЧЕСКОГО ОБОРУДОВАНИЯ

Интернет: [www.tisys.ru](http://www.tisys.ru) [www.tisys.kz](http://www.tisys.kz) [www.tisys.by](http://www.tisys.by) [www.tesec.ru](http://www.tesec.ru) [www.ти-системс.рф](http://www.ти-системс.рф)

Телефоны: +7 (495) 7774788, 7489626, (925) 5007155, 54, 65

Эл. почта: [info@tisys.ru](mailto:info@tisys.ru) [info@tisys.kz](mailto:info@tisys.kz) [info@tisys.by](mailto:info@tisys.by)



TL850P	High Theta	0.6/0.7	
TL650S	High Theta&Low Theta	0.6-0.8	
TL850S	High Theta	0.6-0.8	

## Hisaka Models

Model	Corrugation Angle	Plate Thickness(mm)	Remark
EX3	High Theta&Low Theta	0.5-0.7	3 Types
CX70	High Theta&Low Theta	0.5-0.7	
UX10A	High Theta&Low Theta	0.5-0.7	
UX20	High Theta&Low Theta	0.5-0.8	
UX30A	High Theta&Low Theta	0.5-0.7	
UX40	High Theta&Low Theta	0.6-0.8	
UX80	High Theta & Low Theta	0.6-0.8	
UX90	High Theta&Low Theta	0.5-0.8	
RX10A	High Theta&Low Theta	0.5-0.7	
RX30A	High Theta&Low Theta	0.5-0.8	
RX50A	High Theta	0.5-0.8	
RX70	High Theta&Low Theta	0.5-0.7	
LX00A	Low Theta	0.5-0.7	
LX10A	High Theta&Low Theta	0.5-0.7	
LX20A	High Theta&Low Theta	0.5-0.7	
LX30A	High Theta&Low Theta	0.5-0.7	
LX50A	High Theta&Low Theta	0.5-0.7	
SX40A	High Theta&Low Theta	0.5-0.7	



## Botai Own Models

Model	Corrugation Angle	Plate Thickness(mm)	Remark
HT062	Horizontal&Vertical120°	0.5-0.7	
HT102	Horizontal&Vertical120°	0.5-0.7	
Cipriani125	High Theta	0.5-0.7	
HS20	High Theta&Low Theta	0.5-0.7	
M6MA	High Theta	0.5-0.7	
M6-D	High Theta	0.5-0.7	
M6MC	High Theta&Low Theta	0.5-0.7	
TS6MD	High Theta	0.5-0.7	
TS6ML	High Theta	0.5-0.7	
SF123D	180°	0.8/0.9	
M10BW Lengthened	High Theta&Low Theta	0.5-0.7	
M10MC	High Theta&Low Theta	0.5-0.7	
M10MD	High Theta&Low Theta	0.5-0.7	
M15ME	High Theta		
M10BC	High Theta	0.5-0.7	
M10BD	High Theta	0.5-0.7	
M15ME	High Theta	0.5-0.7	
MX25MA	High Theta&Low Theta	0.6-0.8	



## Inventory

M15MC	High Theta&Low Theta	0.5-0.7	
M15BC	High Theta&Low Theta	0.5-0.7	
JF20S	High Theta		
MX25MB	High Theta&Low Theta	0.6-0.8	
M30MC	High Theta&Low Theta	0.5-0.8	
M30Lengthened1	High Theta	0.5-0.8	
M30Lengthened2	High Theta	0.5-0.8	
M30Lengthened3	High Theta	0.5-0.8	
AK20 Lengthened	High Theta	0.6-0.8	
JF021	180°	0.7-0.9	
BR002	High Theta	0.5-0.7	
BR003	High Theta	0.46	
BR005	High Theta	0.5-0.7	
BR007	High Theta	0.5-0.7	
BR06	High Theta&Low Theta	0.6/0.7	
BR08	High Theta&Low Theta	0.6/0.7	
BB01	High Theta	0.5-0.7	
BB03	High Theta&Low Theta	0.6/0.7	
BB045	High Theta&Low Theta	0.6/0.7	
BB06X	High Theta&Low Theta	0.6/0.7	
BB04G	High Theta	0.6/0.7	
BB06G	High Theta	0.6/0.7	
BB08G	High Theta	0.6/0.7	
BB04	High Theta&Low Theta	0.6/0.7	
BB06	High Theta&Low Theta	0.6/0.7	
BB08	High Theta&Low Theta	0.6/0.7	
BB05	High Theta&Low Theta	0.6-0.8	
BB09	High Theta&Low Theta	0.6-0.8	
BB1.2	High Theta&Low Theta	0.6-0.8	
BR0.62	High Theta	1.0-1.2	
BR81	High Theta&Low Theta	0.5-0.7	
BR121	High Theta&Low Theta	0.5-0.7	
0.6Semi-welded	High Theta&Low Theta	0.8/0.9	
BR2.5	High Theta	0.6-0.8	
BR2.0	High Theta&Low Theta	0.6-0.8	
BR1.3	High Theta&Low Theta	0.6-0.8	



## Fully-welded Heat Exchanger

